



# TECHNICAL SPECIFICATION

- ◇ PA SPECIFICATION
- ◇ LIGHTING PLAN
- ◇ LIGHTING SPECIFICATION
- ◇ PROJECTOR SPECIFICATION
- ◇ STAGE & MAIN HALL DIMENSIONS
- ◇ THEATRE SEATING PLAN
- ◇ CABARET SEATING PLAN
- ◇ GLASS STUDIO DIMENSIONS
- ◇ CAFÉ BAR & CRYPT

# PA SPECIFICATION - MAIN HALL

## INTERNAL PA

The following system will be provided for events where agreed. St George's will provide a House Manager to operate the playback and volume levels, although for more professional or nuanced delivery we recommend hiring a Sound Engineer. Please speak with the Events Department in advance for costs and advice.

### **Mixer:**

Soundcraft UI mixer

### **Microphones:**

#### Radio Mics (Maximum of 4 channels)

4 x Handheld Sennheiser Radio mics

3 x DPA Headset Mics with Sennheiser SK300 bodypacks

#### Wired Mics

2 x SM58 mics

4 x Gooseneck Audio-Technica AT8666 mics

### **Speakers:**

6 x Audac Axir Column speakers along columns on Auditorium level

8 x Audac Axir Column speakers along walls on Gallery level

2 x EV ZX1i Wall Speakers along rear of Gallery level

### **Playback options:**

- ◇ Aux input directly into Mixer from Lighting Cupboard (FOH)
- ◇ HDMI playback from Fixed Screen & Projector: from back of stage wall, from ceiling under Central Gallery next to projector (FOH), and from Lighting Cupboard (FOH)
- ◇ Aux input from back of stage wall
- ◇ Aux input from ceiling under Central Gallery next to projector (FOH)

Please note the Internal PA is intended to amplify speech and is not recommended for singing. If your event is spoken word and you intend to have more than 4 speakers we recommend the Standard Spec PA to be better suited to your needs.

## STANDARD SPEC PA (Provided by King Sound Reinforcement)

The following standard spec package with 1X sound engineer represents the maximum amplification required at St George's Bristol owing to the responsive acoustic of the Auditorium and based on years of experience. Use of more powerful equipment is highly discouraged.

### Front Of House (FOH):

#### Mixing Desk Options

- ◊ Midas M32 32 input Digital C/W Midas DL32 AES50 stage box
- ◊ Midas Pro 2 Digital C/W Midas DL251 AES50 stage box **additional cost £125.00**
- ◊ Digico SD12 Digital console C/W Digico D2 48 input stage box **additional cost £190.00**

#### Speakers

- ◊ 2X L-Acoustics ARCS Wide
- ◊ 2X L-Acoustics ARCS Focus
- ◊ 2X L-Acoustics SB18M
- ◊ 2X L-Acoustics ARCS Wifotilt (for horizontal deployment)
- ◊ 2X L-Acoustics LA4 system amplifier
- ◊ 2X Nova EX600 line source, balcony fills
- ◊ Lab Gruppen IPD 2400 amplifier balcony fills
- ◊ Larger FOH options are available but generally discouraged at St Georges.

Please note these speakers are located in stacks on stage in the far downstage corners and will restrict the view of some audience.

### On Stage

#### Microphones (available as required):

- ◊ Shure - SM57, SM58, Beta 57A Beta 58A, Beta 56, Beta 52, Beta 91A, Beta 87A
- ◊ Sennheiser – E604, E904, E606, E609, E614, E935, E945, MD441
- ◊ AKG – 451B, C214, C414 (**extra cost**)
- ◊ Beyers - M88, M201
- ◊ Audio Technica – ATM25, AT 4041, AT 2021m
- ◊ Line Audio CM3, EV RE 20
- ◊ Sennheiser G4 EW300 hand-held/ head worn radio mics, 835, 935 Or 865 capsule (**UO**) **£30**
- ◊ DPA 4099 Core (**extra cost**)
- ◊ DPA 2011C (**extra cost**)
- ◊ DPA 4061 (**extra cost**)
- ◊ DPA 6066 Core (**extra cost**)
- ◊ DPA 4188 Core (**extra cost**)
- ◊ DPA De Facto (**extra cost**)

#### DIs

Active DIs (BSS/KT) available

#### Monitoring:

- ◊ 6 X Turbosound TFM112M monitors (other options are available extra cost)
- ◊ Lab Gruppen D-40 Lake amplification (6 discrete mixes on stage)
- ◊ Sennheiser 2000 series IEM (additional cost from £30 per channel)

#### On Stage Monitor Mix £POA

- ◊ Midas M32 Console (or other console to suit riders)
- ◊ Passive stage splits
- ◊ Monitor engineer
- ◊ Extra Wedge Monitors/amps as required up to 12 total.

## PA SPECIFICATION – GLASS STUDIO

### INTERNAL PA

10 X Martin Audio CDD6W wall speakers

1 X Handheld Sennheiser Radio mic

## POWER SPECIFICATION

Cabling is not provided for the power sockets, hirers will need to provide their own cabling. Please send a PAT certificate to the Events Department for any portable items brought into the building.

Room	Spec	Notes
Main Hall	1 X 63amp 3 phase 400v socket 8 X 13amp sockets	Under stage hatch access for 1 X 63amp and 2 X 13amp
Glass Studio	2 X 32amp sockets 12 X 13amp sockets	Under floor boxes within the room
Apollo Room	1 X 32amp socket 8 X 13amp sockets	
Garden Room	1 X 32amp socket 4 X 13amp sockets	

# LIGHTING SPECIFICATION – MAIN HALL

The standard specification is shown below. St George's Duty Event Manager will set up 1 show LX state for you, and will operate switching between this and the House Lights. All lanterns are in fixed positions.

## Over stage

24 x Elumen8 ELUM 114 RGBWAUV Hex Par Can

## On stage

6 x ELAR 108 Par RGBW LED

## Front of House

4 x ETC source 4 Zoom 15/30 Profile

1 x ETC source 4 Zoom 25/50 Profile

5 x Fresnel

2 x Par 64

## **Control:**

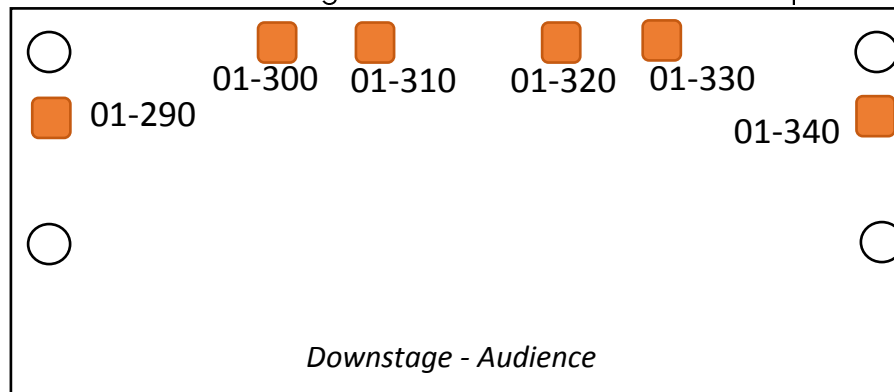
Chamsys MagicQ software on laptop

St George's does not have a lighting desk, which means changing lights after the scenes (usually during Sound Check) is not possible. For a more creative and flexible lighting design, we recommend hiring a Lighting Desk and Engineer. Please contact the Events Department for further details.



# LIGHTING PLAN – MAIN HALL

ON STAGE: on Reredos & 4 stage columns unless otherwise requested

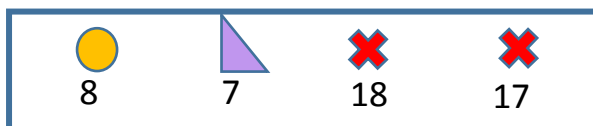


OVER THE STAGE:

01-220	01-230	01-240	01-250	01-260	01-270
01-160	01-170	01-180	01-190	01-200	01-210
01-100	01-110	01-120	01-130	01-140	01-150
01-040	01-050	01-060	01-070	01-080	01-090

FRONT OF HOUSE:

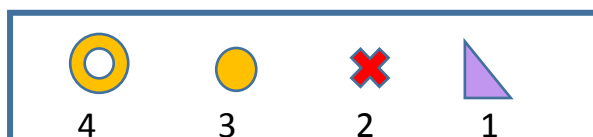
Front Left Hatch



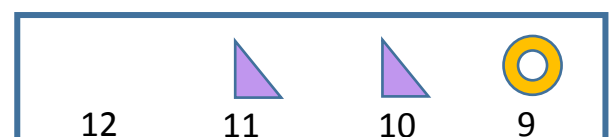
Front Right Hatch



Rear Left Hatch



Rear Right Hatch



KEY:

	ELAR 108 Par RGBW LED		Selecon Acclaim Fresnel 500/600W
	Elumen8 ELUM 114 RGBWAUV Hex Par Can		
	ETC source 4 Zoom 15/30 Profile		No power (out of action)
	ETC source 4 Zoom 25/50 Profile	1	DMX Address

# PROJECTOR SPECIFICATION

**FIXED SCREEN & PROJECTOR:** Main Hall only

Screen Specifications:

Screen Model	Screen International Major Pro C
Screen Dimensions	700cm x 525cm
Format	4:3
Finish	Matt white surface with no black borders

Projector Specifications:

ITEM	DESCRIPTION
Model	Christie D12WU-H 1DLP
Image brightness	12,375 lumens (compliant with ISO 21118 std) 12,000 centre lumens 11,000 ANSI lumens
Contrast	5000:1 (Dynamic Aperture Enabled) 1200:1 Full On/Off 250:1 ANSI
Colour Wheel	6-segment (RGBCYW)
Display Type	1-chip 0.96" DMD
Native Resolution	1920 x 1200 WUXGA (2,304,000 pixels) 16:10
Lamp Type	2 x 465W (003-005237-XX)
Input - Standard	HDMI x 3 (One on back wall of stage, one on ceiling next to projector, one in lighting cupboard) VGA x 2 (One on back wall of stage, one on ceiling next to projector) 3GSDI x 1 (BNC) DVI-D x 1 (Digital only) Display Port x 1 HD15 x 1 RGBHV/Component (5 BNC) Composite Video x 1 (BNC) S-Video x 1 (mini DIN) Component Video (RCA) USB x 1 (Type B mini) - Display over USB USB x 1 (type A) - Image Viewer or WiFi Dongle (optional) HDBaseT (RJ45 x 1) RJ45 x 1 (Christie Presenter over wired network connection)

## LARGE FREE STANDING SCREEN & PROJECTOR – Rear Projection

### Screen Specifications:

Screen Model	Da-Lite Fast Fold Deluxe
Screen Dimensions	304cm x 213cm
Format	4:3
Finish	Light grey matt surface with black borders

### Projector Specifications:

ITEM	DESCRIPTION
Model	Sanyo PDG-DXTIOL XGA (1024 x 768) DLP Projector - 5200 ANSI lumens
Projection system	Single DLP chip, 4 segment colour wheel
Resolution	1024 x 768 pixels* (up to UXGA @ 60 Hz, up to SXGA+ @ 60 Hz on DVI-D)
Lamp	260 W AC (230 W in Eco mode), Dual lamp system
Lens shift	Vertical + 0.5V, Horizontal +/- 0.1H (LNS-W40, LNS-S40, LNS-T40, LNS-T41)
Inputs	1 Analog RGB (Mini D-Sub 15P) 1 Analog RGB R/Cr, G/Y, B/Cb, H, V (BNC x 5), 1 Digital RGB (DVI-D 24P), 1 Component Y, Cb/Pb, Cr/Pr (RCA x 3), 1 Component (Mini D-Sub 15P) shared with COMPUTER 1 IN, 1 S-Video (Mini DIN 4P), 1 Video, 3 Stereo Mini Audio, 2 (L/R) RCA Audio, 1 Remote Control (Stereo Mini)
Outputs	1 RGB (Mini D-Sub 15P), 1 Stereo Mini Audio, 1 Screen Trigger
Video Compatibility	NTSC, NTSC4.43, PAL, PAL-60/N/M/B/G/H/I), SECAM, HDTV: 1080i, 720p, SDTV: 576p, 576i, 480p, 480i
Horizontal Resolution	NTSC / NTSC4.43 / PAL / PAL-M / PAL-N / PAL60: 540 TV lines SECAM: 300 TV lines RGB: 1024 dots (H) x 768 dots (V)



## SMALL FREE STANDING SCREEN & PROJECTOR

### Screen Specifications:

Screen Dimensions	198cm x 149cm
Format	4:3
Finish	White matt surface with black borders on top and bottom

### Projector Specifications:

ITEM	DESCRIPTION
Model Number	RICOH PJ X2240
Projection System	Single Chip DLP
Resolution	1024 x 768
Panel	0.55in
Brightness	3000 lumens
Native Aspect Ratio	4x3
Native Contrast Ratio	2200:1
Throw Ratio	1.95 - 2.15
Input Signals	NTSC, PAL, SECAM, NTSC4.43, PAL-M, PAL-60
Connection Terminal	Mini D-SUB15pin x 1 (Computer 1 IN), Mini DIN 4pin x 1, RCA_1pin x 1, D-SUB 9pin x 1 (RS-232C), USBTYPE-minB x 1, HDMI(1.4) x 1

ITEM	DESCRIPTION
Model Number	InFocus T104
Projection System	DLP
Resolution	1024 x 768
Brightness	2200/2700 lumens
Native Aspect Ratio	4x3
Throw Ratio	2.04~1.85
Connection Terminal	VGA, S-Video, Composite

## STAGE & MAIN HALL DIMENSIONS

Main Hall: 17m x 25m

Stage: 10.2m x 7m

*With Stage Extension:*

10.2m x 9m

Choir Risers: 0.42 m Height

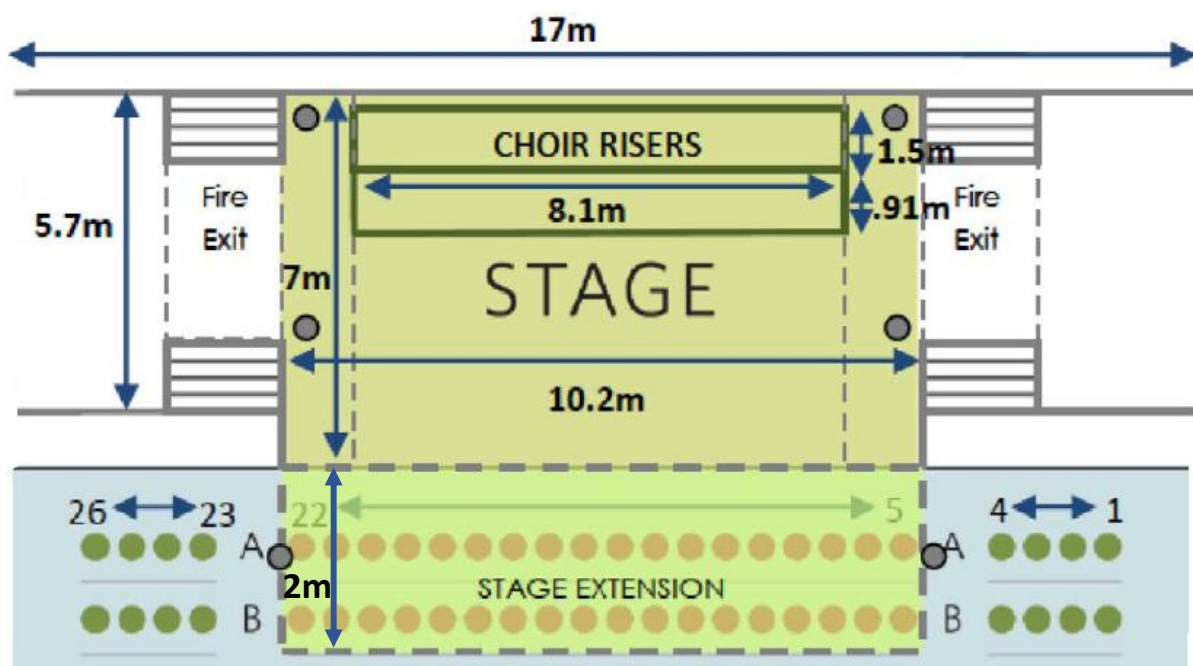
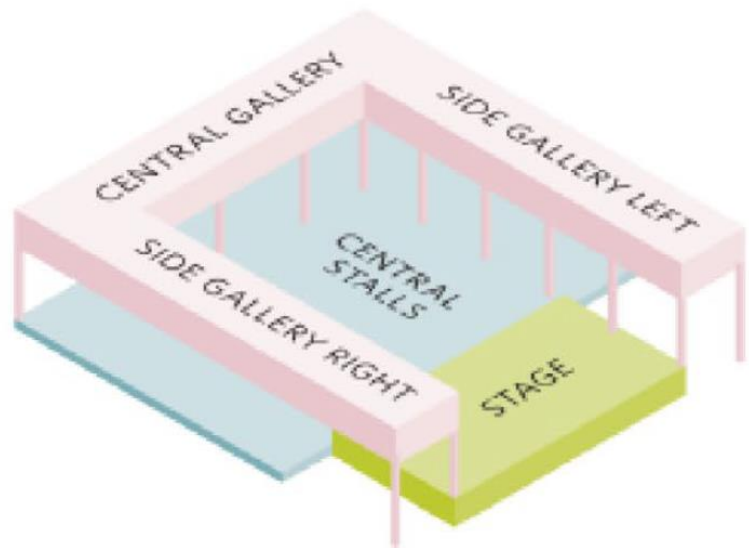
Back Riser: 8.1m x 1.5m

Front Riser: 8.1m x 0.91m

Seating Capacity: 580

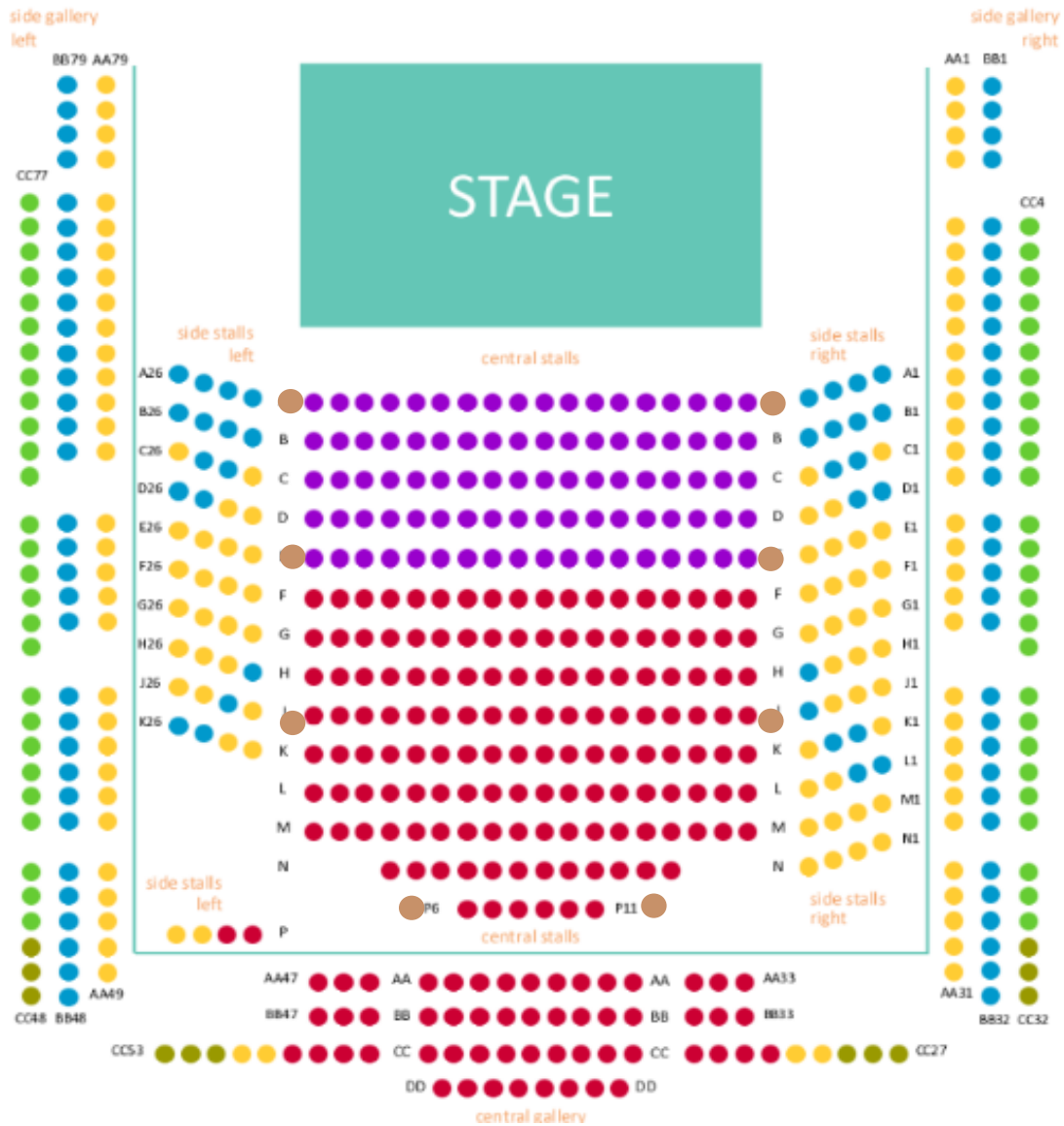
Stalls – 330

Gallery – 250





# THEATRE SEATING PLAN - HALL



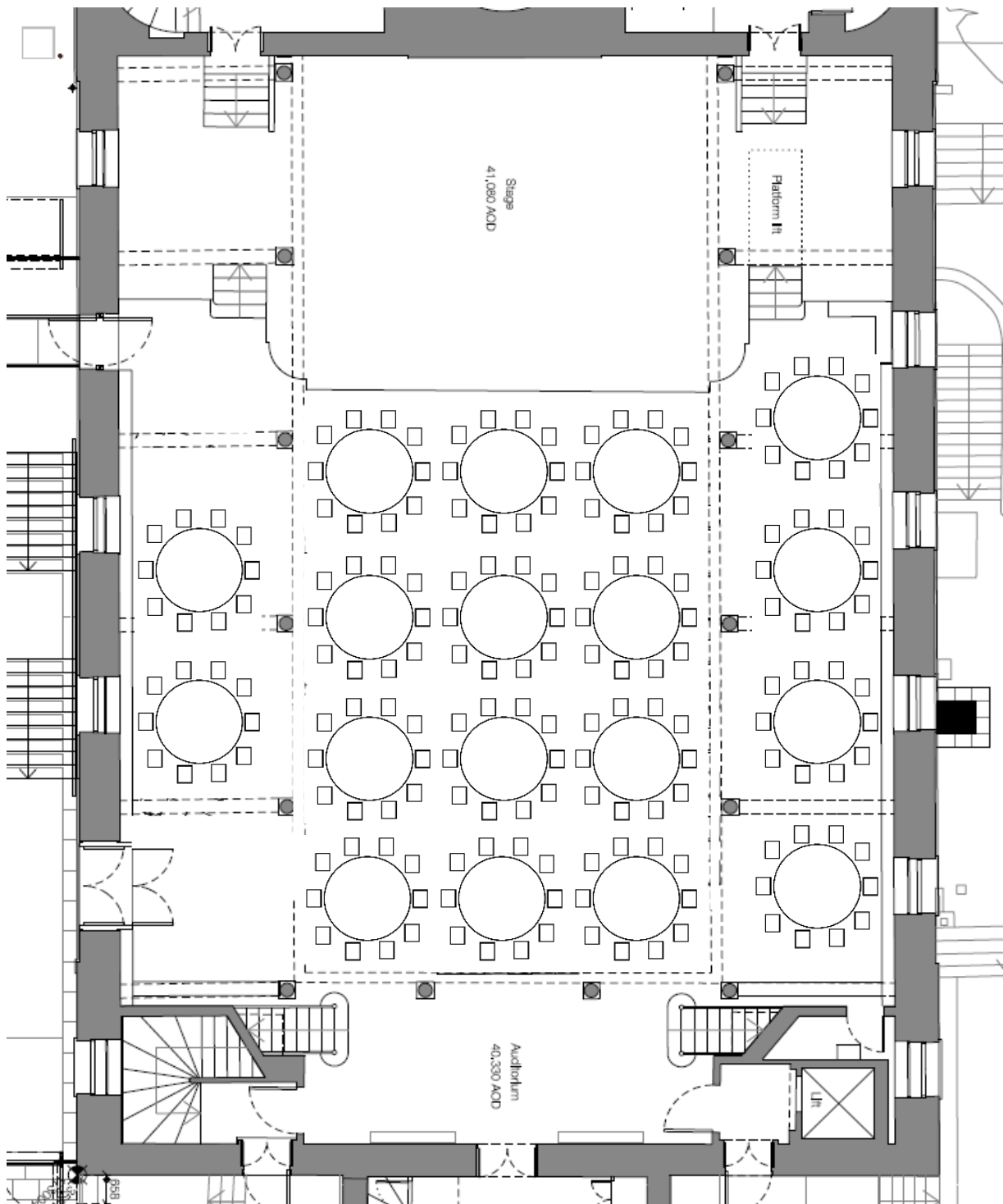
Area	No Seats
<b>Stalls</b>	<b>330</b>
<b>Central Stalls</b>	<b>234</b>
<b>Side Stalls</b>	<b>96</b>
<b>Gallery</b>	<b>250</b>
<b>Side Galleries</b>	<b>185</b>
<b>Central Gallery</b>	<b>65</b>
<b>Total</b>	<b>580</b>

# CABARET SEATING PLAN - HALL

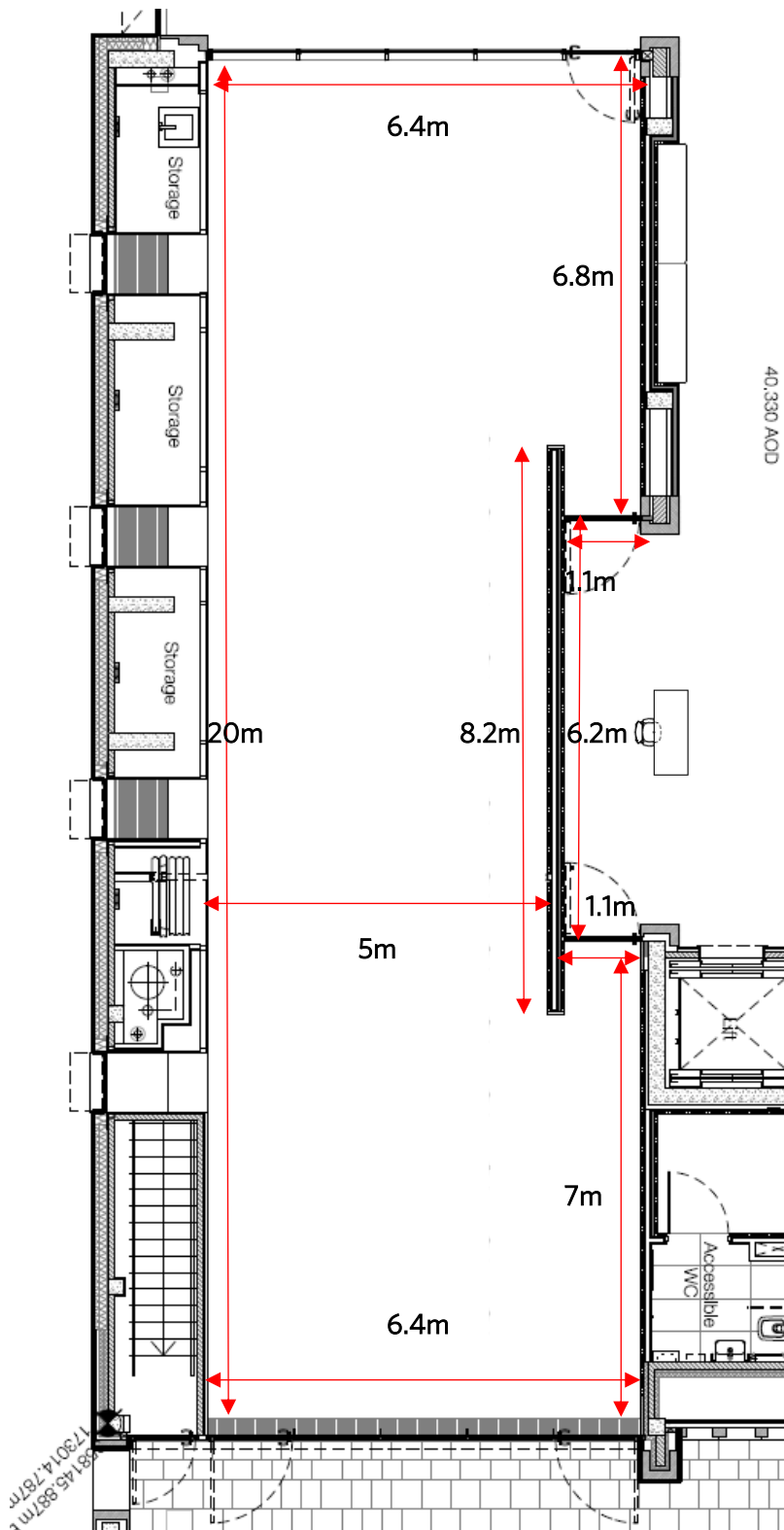
Capacity: 180 seated

Tables: 18 x 6' Round

Chairs: 10 x Auditorium chairs max. per table



# GLASS STUDIO DIMENSIONS





# PARKING & LOAD IN

## LOAD IN ADDRESS:

Charlotte Street,  
Bristol  
BS1 5RR

Drive up Great George Street,  
then turn right, and right  
again to Charlotte Street to  
our gated car park.



## PARKING

There are:

- 2 x spaces available before 6pm
- 2 x spaces available after 6pm

Each car parking space is 4x2.5m.

Parking availability is subject to  
change and spaces need to be booked in advance with our Events Team.



**Tour Busses / Trucks / Coaches.** If you are travelling with a tour bus/truck or coach  
please contact the Events Department to get details about Parking Bay Suspensions,  
which are re-chargeable.

## DISABLED ACCESS

Please ensure you do not obstruct the two disabled access points in the car park at any  
time (see pictures below for reference).



## LOADING INTO THE MAIN HALL

2 x set of steps into the Main Hall.

- 10 x steps down from car park level to back doors
- 7 x steps from back doors to Hall level
- 5 x steps from Hall level to stage (on both sides of the stage)



There is a bridge connecting the car park to our Internal Lift which is available for load-in directly into the Hall level on Floor 1.

The weight limit is 1000kg.

The dimensions are:

Door width: 900mm

Door height: 2100mm

Cab internal height: 2200mm

Cab internal width: 1600mm

Cab internal depth: 1400mm

